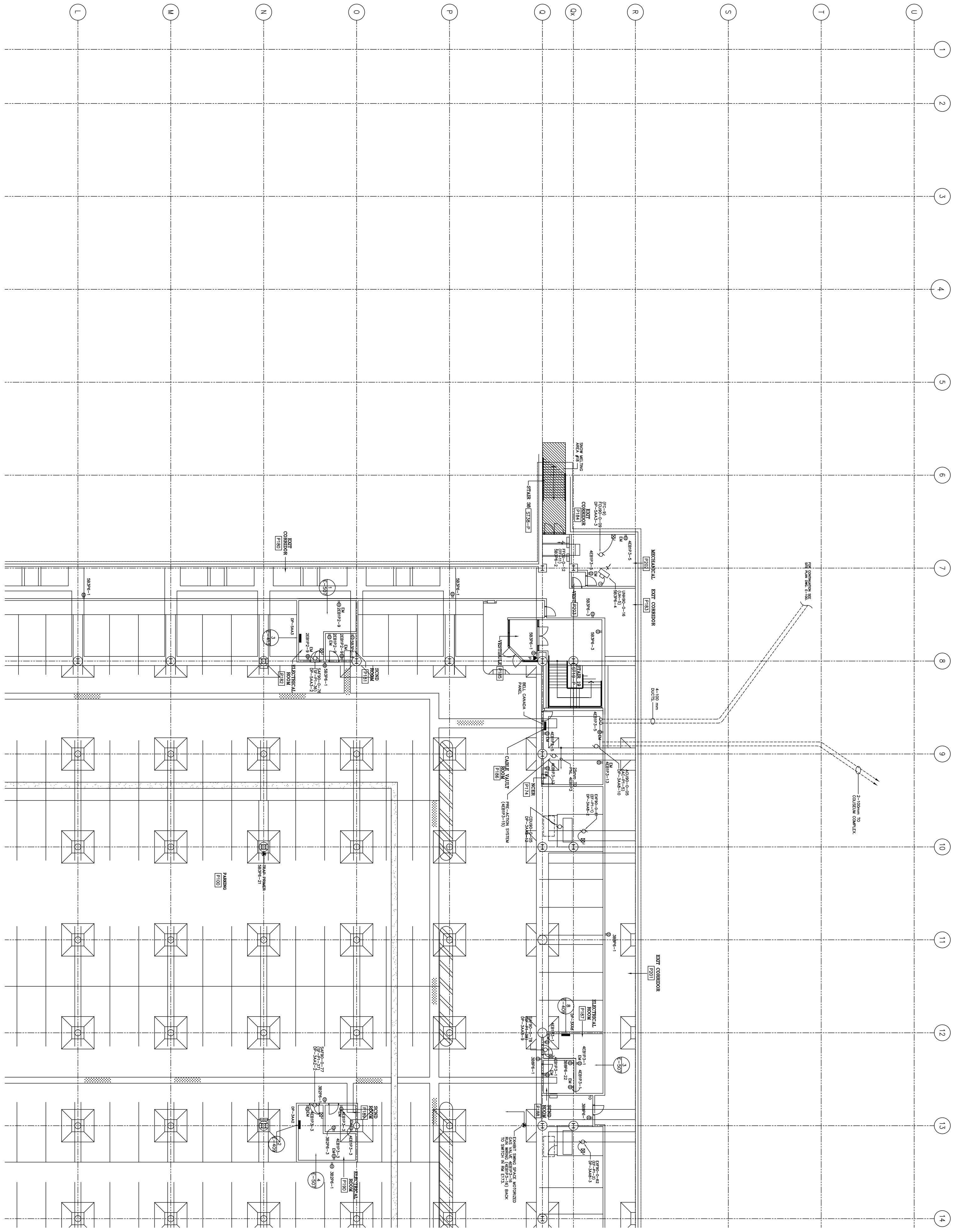


NOTES:
 REFER TO INCORPORATE FIELD INSTRUCTIONS, CHANGE THE CONTRACTOR.
 BUILD INFORMATION SUPPLIED BY THE CONTRACTOR.

CERTIFIED AS BUILT
 Univex (Ontario) Limited
[Signature]
 February 28, 1997



FOR CONTINUATION SEE DWG. E-213

CONTRACTOR SHALL VERIFY ALL DIMENSIONS IN THE JOB. THIS DRAWING SHALL NOT BE USED FOR CONSTRUCTION PURPOSES UNLESS OTHERWISE NOTED.

15	ADDITIONAL CONTRACTORS' COMMENTS	MAY 13/97	C.V.B.
14	REVISION TO P1-10	FEB 26/97	C.V.B.
13	REVISION TO P1-10	JAN 19/97	C.V.B.
12	REVISION TO P1-10	NOV 19/96	C.V.B.
11	REVISION TO P1-10	OCT 17/96	C.V.B.
10	REVISION TO P1-10	OCT 17/96	C.V.B.
9	FIELD INSTRUCTION E-115	SEP 27/96	C.V.B.
8	FIELD INSTRUCTION E-114 & E-9	MAY 20/96	C.V.B.
7	FIELD INSTRUCTION E-111 & E-8	APR 26/96	C.V.B.
6	ISSUED FOR CONSTRUCTION	APR 26/96	C.V.B.
5	ISSUED FOR BUILDING PERMIT	FEB 28/96	C.V.B.
4	ISSUED FOR PROGRESS REVIEW	DEC 27/95	C.V.B.
3	ISSUED FOR PROGRESS REVIEW	DEC 27/95	C.V.B.
2	ISSUED FOR PROGRESS REVIEW	SEP 27/95	C.V.B.
1	ISSUED FOR REVIEW	AUG 21/95	C.V.B.

Checked: D.T./S.B./O.G. 11-125
 Date: APRIL 95
 C.V.B.

Scale: 1:125

Project No. NTC-C-201
 Drawing No. E-212

Central Data Engineers Inc.
 Consulting Engineers
 1000 SHEPPARD AVENUE EAST, SUITE 100
 SCARBOROUGH, ONTARIO M1S 1W5
 TEL: (416) 291-2333
 FAX: (416) 291-2334

THE BOARD OF GOVERNORS OF EXHIBITION PLACE
 NATIONAL TRADE CENTRE
 AT
 EXHIBITION PLACE

P1 LEVEL PLAN
 BLOCK 'E'
 POWER & SYSTEMS